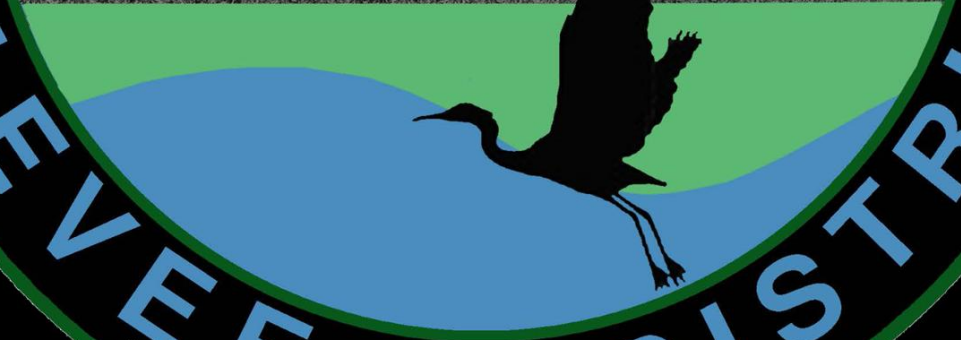
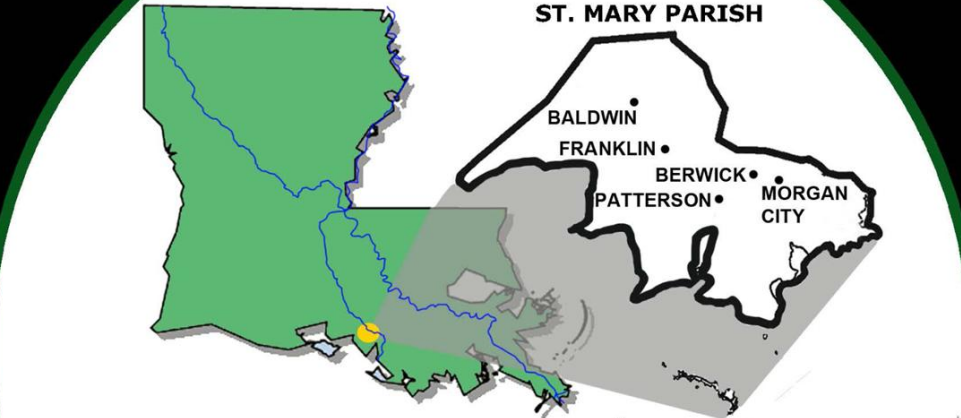


ST. MARY

ST. MARY PARISH

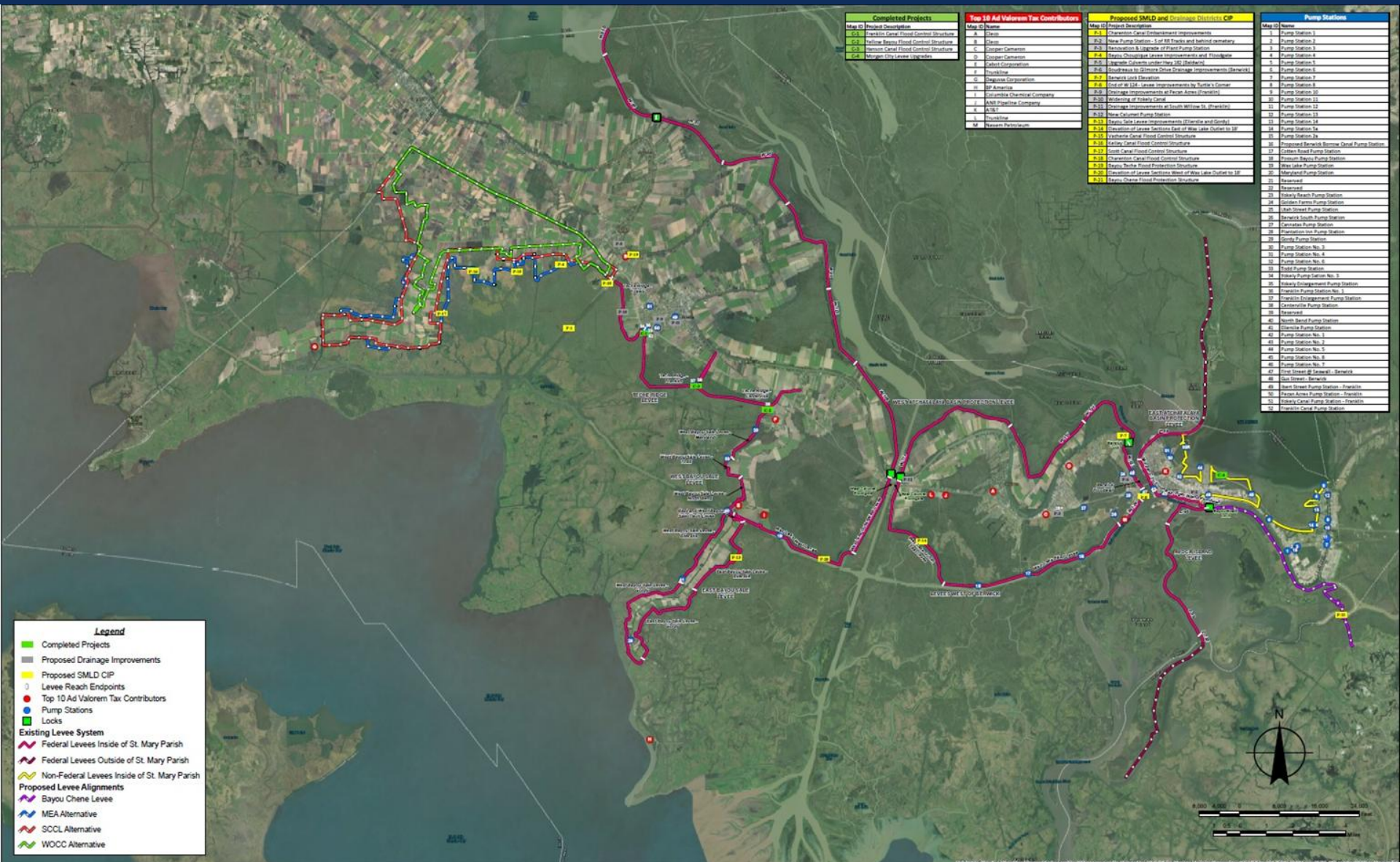
BALDWIN
FRANKLIN
BERWICK
PATTERSON
MORGAN CITY



LEVEE

DISTRICT

St. Mary Levee District Base Map



Completed Projects	
Map ID	Project Description
E-1	English Canal Flood Control Structure
E-2	Yellow Bayou Flood Control Structure
E-3	Houma Canal Flood Control Structure
E-4	Morgan City Levee Upgrade

Top 10 Ad Valorem Tax Contributors	
Map ID	Name
A	State
B	State
C	Cooper Cement
D	Cooper Cement
E	Cooper Cement
F	Cooper Cement
G	Cooper Cement
H	Cooper Cement
I	Cooper Cement
J	Cooper Cement
K	Cooper Cement
L	Cooper Cement
M	Cooper Cement

Proposed SMLD and Drainage Districts CIP	
Map ID	Project Description
P-1	Chambers Canal Flood Control Improvements
P-2	New Pump Station - 1 of 40 Tracts and Behind Cemetery
P-3	Restoration & Upgrade of Canal Pump Station
P-4	Bayou Chalmette Levee Improvements and Floodgate
P-5	Bayou Chalmette Levee Improvements (2010)
P-6	Southwest to Orleans Drive Drainage Improvements (Newark)
P-7	Newark Canal Flood Control Structure
P-8	East of W. 12th - Levee Improvements by Butler's Corner
P-9	Drainage Improvements at Pecan Acres (Newark)
P-10	Restoration of Traylor Canal
P-11	Drainage Improvements at South Willow St. (Newark)
P-12	Drainage Improvements at South Willow St. (Newark)
P-13	New Calumet Pump Station
P-14	Bayou de la Veve Improvements (Orleans and Grand)
P-15	Restoration of Levee Section East of W. Lake Outlet to 30'
P-16	Bayou de la Veve Flood Control Structure
P-17	South Canal Flood Control Structure
P-18	Chambers Canal Flood Control Structure
P-19	Bayou de la Veve Flood Protection Structure
P-20	Restoration of Levee Section West of W. Lake Outlet to 30'
P-21	Bayou de la Veve Flood Protection Structure

Pump Stations	
Map ID	Name
1	Pump Station 1
2	Pump Station 2
3	Pump Station 3
4	Pump Station 4
5	Pump Station 5
6	Pump Station 6
7	Pump Station 7
8	Pump Station 8
9	Pump Station 9
10	Pump Station 10
11	Pump Station 11
12	Pump Station 12
13	Pump Station 13
14	Pump Station 14
15	Pump Station 15
16	Pump Station 16
17	Proposed Newark Bayou Canal Pump Station
18	Calumet Road Pump Station
19	Orleans Bayou Pump Station
20	W. Lake Pump Station
21	Morgan Pump Station
22	Restored
23	Restored
24	Bayou de la Veve Pump Station
25	Golden Farms Pump Station
26	Marsh Street Pump Station
27	Newark South Pump Station
28	Orleans Pump Station
29	Plantation Inn Pump Station
30	Plantation Pump Station
31	Pump Station No. 1
32	Pump Station No. 2
33	Pump Station No. 3
34	Pump Station No. 4
35	Pump Station No. 5
36	Pump Station No. 6
37	Pump Station No. 7
38	Pump Station No. 8
39	Pump Station No. 9
40	Pump Station No. 10
41	Plantation Pump Station
42	Restored
43	North Canal Pump Station
44	Bayou de la Veve Pump Station
45	Pump Station No. 1
46	Pump Station No. 2
47	Pump Station No. 3
48	Pump Station No. 4
49	Pump Station No. 5
50	Pump Station No. 6
51	Pump Station No. 7
52	Plantation Pump Station
53	Plantation Pump Station
54	Plantation Pump Station
55	Plantation Pump Station
56	Plantation Pump Station
57	Plantation Pump Station
58	Plantation Pump Station
59	Plantation Pump Station
60	Plantation Pump Station

Legend

- Completed Projects
- Proposed Drainage Improvements
- Proposed SMLD CIP
- Levee Reach Endpoints
- Top 10 Ad Valorem Tax Contributors
- Pump Stations
- Locks

Existing Levee System

- Federal Levees Inside of St. Mary Parish
- Federal Levees Outside of St. Mary Parish
- Non-Federal Levees Inside of St. Mary Parish

Proposed Levee Alignments

- Bayou Chene Levee
- MEA Alternative
- SCCL Alternative
- WOCC Alternative







Bayou Teche Flood Control Structure



Yokely Extension









Franklin Canal

Floodgate & Pump Station





Hanson Canal







Yellow Bayou

Closure and Pump Station





Morgan City

Backwater Protection



MORGAN CITY LEVEE IMPROVEMENTS - OVERALL PLAN
St. Mary Parish Consolidated Gravity Drainage District No. 2
St. Mary Parish Government,
& St. Mary Levee District



An aerial photograph of a port area, likely Bayou Chene, showing a large body of water, numerous shipping containers stacked in rows, and several cranes. A large concrete structure, the floodgate, is visible in the foreground, partially obscuring the view of the port. The background shows a forested area and a road.

Bayou Chene

Floodgate

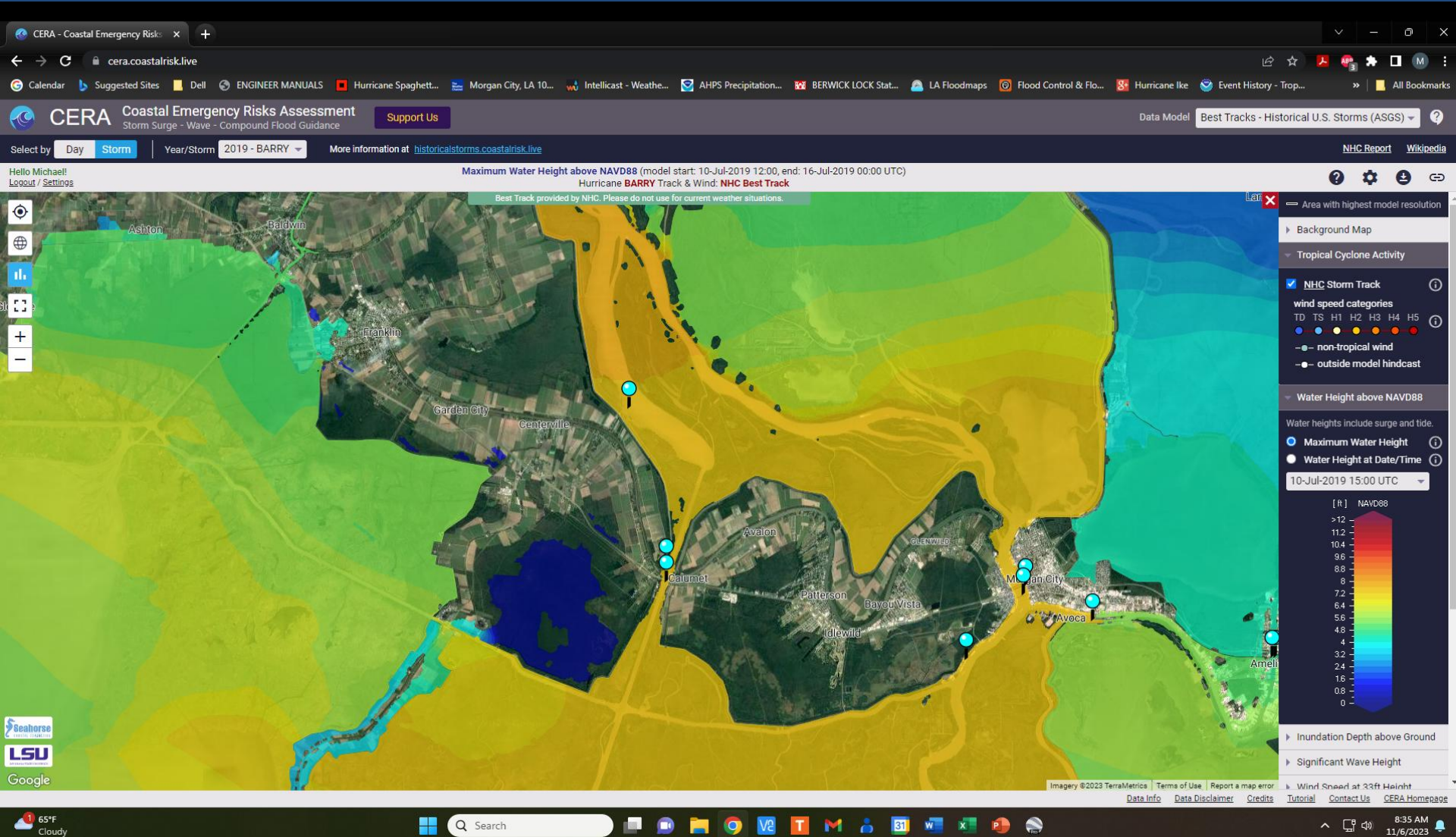


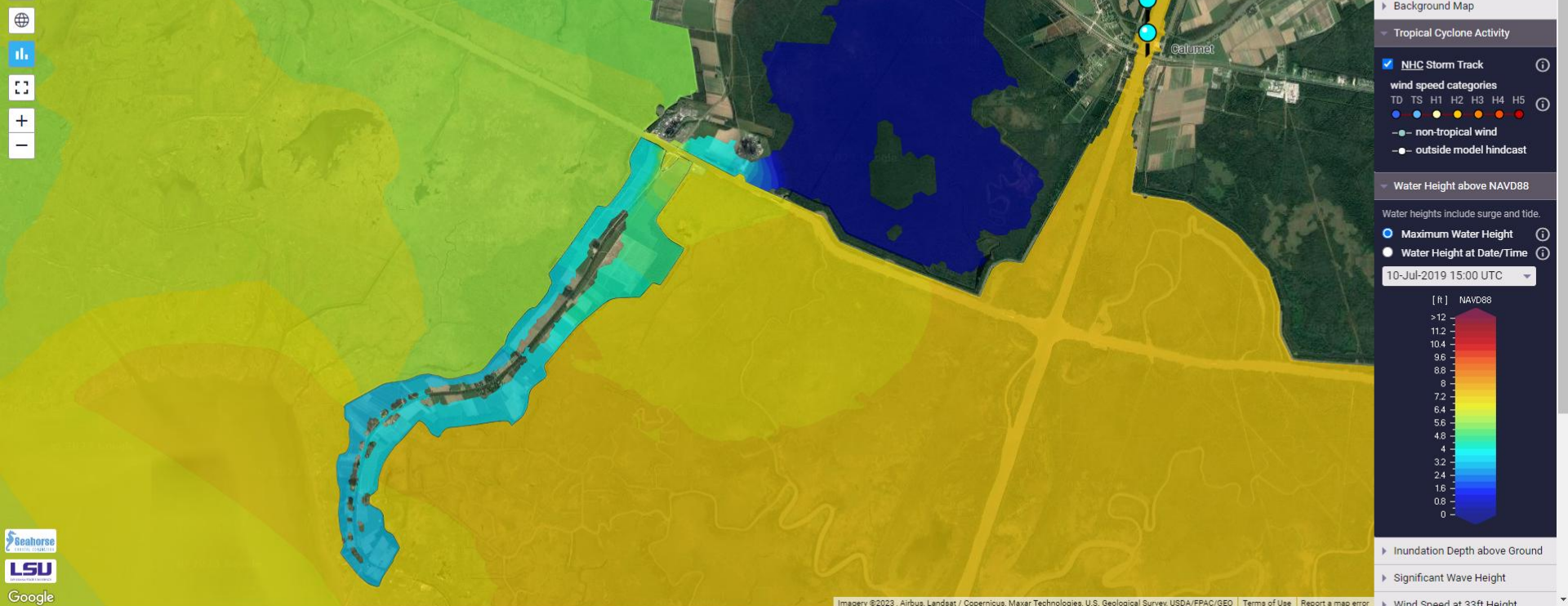
Murphy's Law

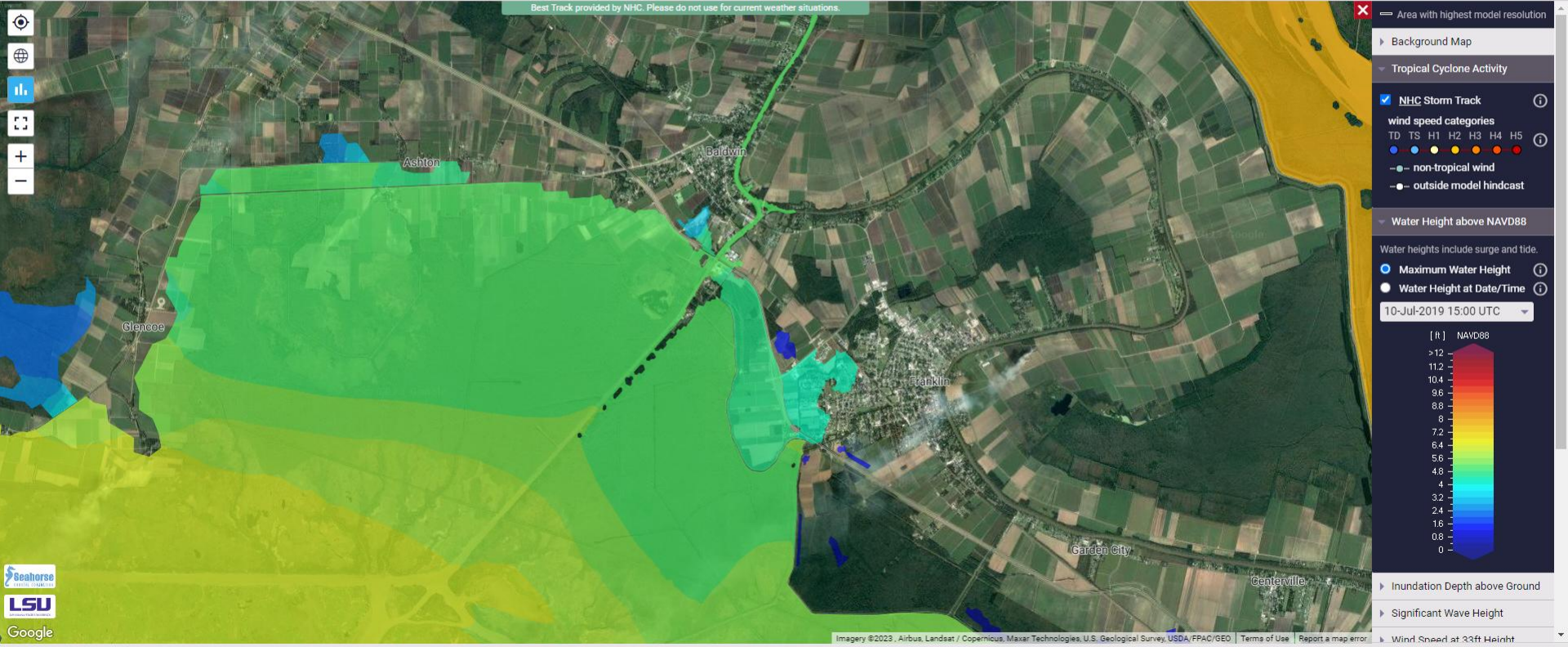
Murphy's Law is an adage stating, "**Anything that can go wrong will go wrong**". Coined around 1948–1949 by engineer Edward A. Murphy Jr. after a testing mishap, it serves as a humorous or cynical reminder to expect, or **prepare for, potential failures in any situation**. It highlights the inevitability of errors.

CERA: Coastal Emergency Risks Assessment

Storm Surge – Wave – Compound Flood Guidance







Logos: Seahorse, LSU, Google. Footer: Imagery ©2023, Airbus, Landsat / Copernicus, Maxar/Technologies, U.S. Geological Survey, USDA/FPAC/ISD, Terms of Use, Report a map error, Data Info, Data Disclaimer, Credits, Tutorial, Contact Us, CERA Homepage. System tray: 65°F Cloudy, Search, Taskbar icons, 8:35 AM 11/6/2023.

Hurricane Laura

Surge Prediction based on model 28 run
NOT FOR PUBLIC RELEASE

<u>Location</u>	<u>Run 28</u>		<u>Run 28 veer right</u>		<u>Timing</u>	<u>Actual Gauge Elevation</u> <u>Actual Time</u>		
	<u>Gauge data</u>	<u>Navd88</u>	<u>Gauge data</u>	<u>Navd88</u>				
Atchafalaya River	6.43'	5.32'	6.92'	5.81'	6:00 AM	6.48'	12:00 PM	27-Aug
Bayou Sale	6.72'	5.51'	7.47'	6.26'	7:00 AM	7.12'	8:45 AM	27-Aug
Charenton Canal	6.06'	5.26'	6.75'	5.95'	9:00 AM	5.15' Navd88	9:00 AM	27-Aug
Franklin Canal		5.25'		6.2'	10:00 AM	6' Navd88	10:00 AM	27-Aug
Amelia	3.24	2.63'	3.34'	2.73'	4:00 AM	3.68'	7:00 AM	28-Aug
Cypremort Point	7.28'	5.8'	9.82'	8.34'	4:00 AM	10.6'	4:00 AM	27-Aug

Based off of CERA model ADCIRC storm surge and wave guidance. Not for public release. These are only predictions.

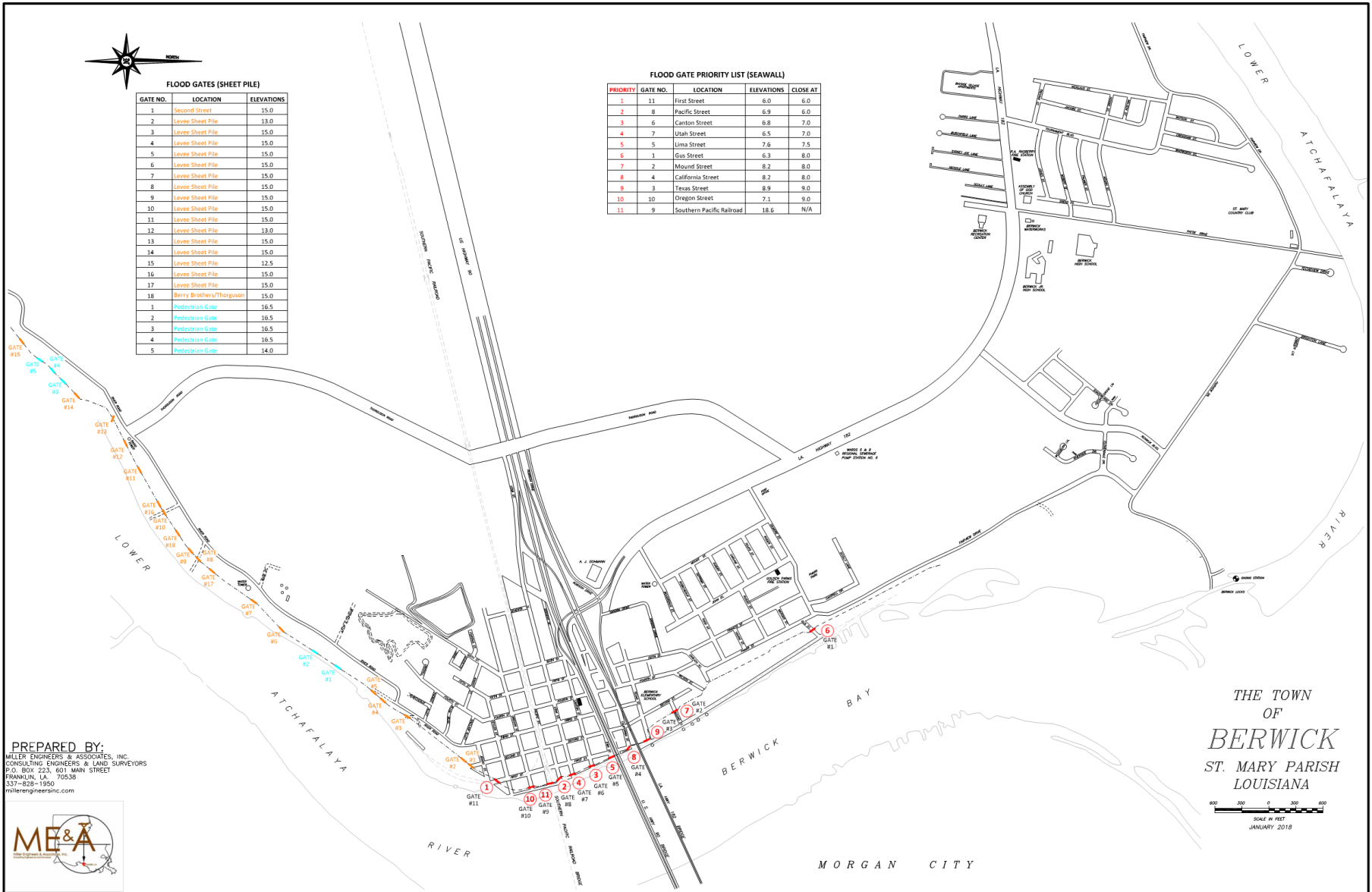


FLOOD GATES (SHEET PILE)

GATE NO.	LOCATION	ELEVATIONS
1	Second Street	15.0
2	Levee Sheet Pile	13.0
3	Levee Sheet Pile	15.0
4	Levee Sheet Pile	15.0
5	Levee Sheet Pile	15.0
6	Levee Sheet Pile	15.0
7	Levee Sheet Pile	15.0
8	Levee Sheet Pile	15.0
9	Levee Sheet Pile	15.0
10	Levee Sheet Pile	15.0
11	Levee Sheet Pile	15.0
12	Levee Sheet Pile	13.0
13	Levee Sheet Pile	15.0
14	Levee Sheet Pile	15.0
15	Levee Sheet Pile	12.5
16	Levee Sheet Pile	15.0
17	Levee Sheet Pile	15.0
18	Berry Brothers/Thorogwen	15.0
1	Pedestrian Gate	16.5
2	Pedestrian Gate	16.5
3	Pedestrian Gate	16.5
4	Pedestrian Gate	16.5
5	Pedestrian Gate	14.0

FLOOD GATE PRIORITY LIST (SEAWALL)

PRIORITY	GATE NO.	LOCATION	ELEVATIONS	CLOSE AT
1	11	First Street	8.0	6.0
2	8	Pacific Street	6.9	6.0
3	6	Canon Street	6.8	7.0
4	7	Utah Street	6.5	7.0
5	5	Lima Street	7.6	7.5
6	1	Gus Street	6.3	8.0
7	2	Mound Street	8.2	8.0
8	4	California Street	8.2	8.0
9	3	Texas Street	8.9	9.0
10	10	Oregon Street	7.1	9.0
11	9	Southern Pacific Railroad	18.6	N/A



PREPARED BY:
 MILLER ENGINEERS & ASSOCIATES, INC.
 CONSULTING ENGINEERS & LAND SURVEYORS
 P.O. BOX 223, 601 MAIN STREET
 FRANKLIN, LA. 70556
 337-828-1950
 millerengineersinc.com



THE TOWN
 OF
BERWICK
 ST. MARY PARISH
 LOUISIANA



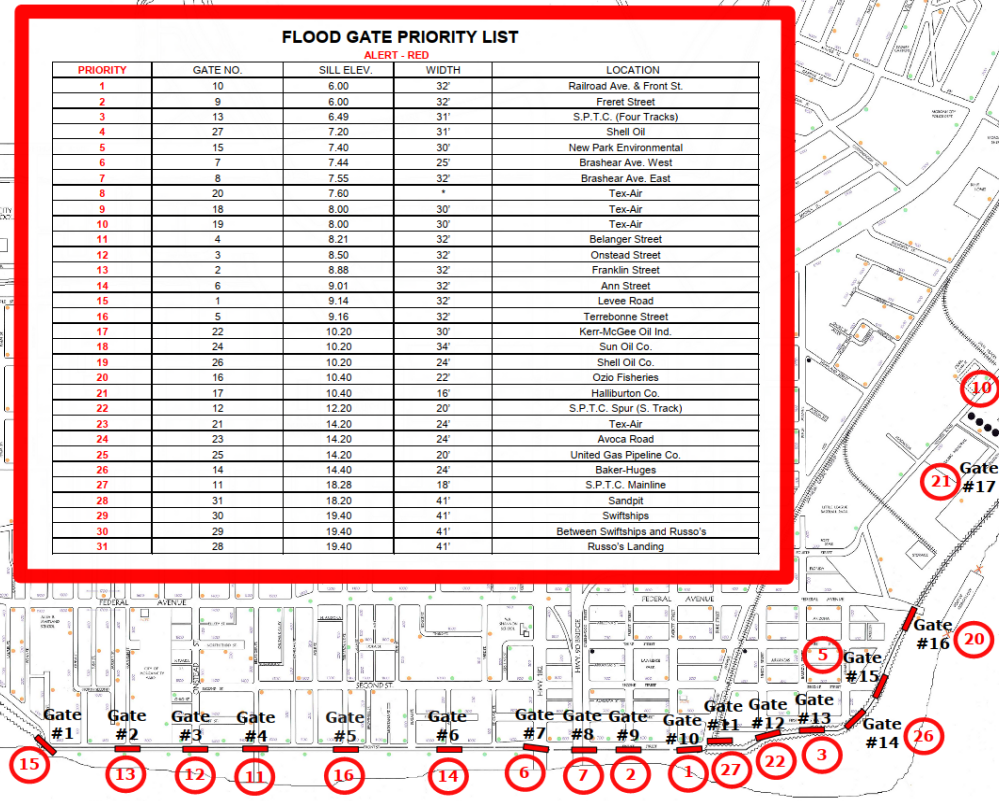
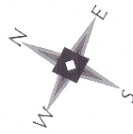
MORGAN CITY

City of Morgan City

FLOOD GATE PRIORITY LIST

ALERT - RED

PRIORITY	GATE NO.	SILL ELEV.	WIDTH	LOCATION
1	10	6.00	32'	Railroad Ave. & Front St.
2	9	6.00	32'	Freret Street
3	13	6.49	31'	S.P.T.C. (Four Tracks)
4	27	7.20	31'	Shell Oil
5	15	7.40	30'	New Park Environmental
6	7	7.44	25'	Brashear Ave. West
7	8	7.55	32'	Brashear Ave. East
8	20	7.60	"	Tex-Air
9	18	8.00	30'	Tex-Air
10	19	8.00	30'	Tex-Air
11	4	8.21	32'	Belanger Street
12	3	8.50	32'	Onstead Street
13	2	8.88	32'	Franklin Street
14	6	9.01	32'	Ann Street
15	1	9.14	32'	Levee Road
16	5	9.16	32'	Terrebonne Street
17	22	10.20	30'	Kerr-McGee Oil Ind.
18	24	10.20	34'	Sun Oil Co.
19	26	10.20	24'	Shell Oil Co.
20	16	10.40	22'	Ozo Fisheries
21	17	10.40	16'	Halliburton Co.
22	12	12.20	20'	S.P.T.C. Spur (S. Track)
23	21	14.20	24'	Tex-Air
24	23	14.20	24'	Avoca Road
25	25	14.20	20'	United Gas Pipeline Co.
26	14	14.40	24'	Baker-Huges
27	11	16.28	18'	S.P.T.C. Mainline
28	31	16.20	41'	Sandpit
29	30	19.40	41'	Swiftships
30	29	19.40	41'	Between Swiftships and Russo's
31	28	19.40	41'	Russo's Landing



SCALE: 1" = 400'

St. Mary Levee District Gauges

Use the links below to access our gauges. If you notice a gauge that is not working as expected, please [Contact Us](#) and let us know.

Bayou Teche	East of Chene GIWW	West of Jaws	Gauge Comparison
South of Chene	Atchfalaya River @ Morgan City (USACE)	Atchfalaya River @ Morgan City (USGS)	Stephensville Gauge
Lake Palourde near Morgan City	Ohio River gauge @ Cairo	Mississippi River @ New Orleans	Bayou Chene
Bayou Boeuf Locks West	Bayou Boeuf Locks East	Red River Landing	Wax Lake Outlet
USACE daily stage and flow data	Simmesport		

EOC/Morgan City Port of West St. Mary/Franklin

Weather History Map Log In

Buy a weather station > Port of Morgan City EOC - Tempest by WeatherFlow

75°

Feels Like 75°

Heavy Rain

99% humidity

SSW 4 mph

30.1 inHg

1 UV

14 MIN

0.23 in

Today
Thunderstorms Likely

100% ↓ 73° ↑ 78°

6:14 am 7:47 pm

1 pm	2 pm	3 pm	4 pm	5 pm	6 pm	7 pm	8 pm	9 pm	10 pm	11 pm	12 am
------	------	------	------	------	------	------	------	------	-------	-------	-------

Information Collection

- Pre-event Data
- Post event Data
- Note problem areas and find ways to fix them.
- Post event meetings with stake holders.
- Lessons learned
- Weather Stations (Tempest)

Questions??

WWW.SMLD.ORG