



- **2026 HURRICANE SEASON**
- **OFFICE OF EMERGENCY PREPAREDNESS**

DECLARATIONS OF EMERGENCY AND CURFEWS

- PARISH PRESIDENT
- MAYORS
- TRIBAL CHIEF OF THE CHITIMACHA TRIBE
- GOVERNOR MAKES DECLARATION REQUEST
- TO THE PRESIDENT
- PRESIDENT OF U.S. DECLARES A NATIONAL EMERGENCY



EMERGENCY OPERATIONS CENTER

EMERGENCY MEETINGS
HELD WITH PUBLIC
OFFICIALS & SUPPORT STAFF
WHO GET BRIEFED BY THE
WEATHER SERVICE AND
GOHSEP

DECISIONS ARE MADE AS TO
RESOURCES,
EVACUATIONS, PLAN OF
ACTION TO TAKE.

**PUBLIC INFORMATION IS
PUT ON OUR SOCIAL
MEDIA NETWORK**

AFTER EACH MEETING,
EMAILS ARE SENT OUT TO
ALL AGENCIES/MEDIA

WEATHER SERVICE GIVES
REGULAR UPDATES THAT
WE PASS ON TO YOU

PRE STORM

CHECK AND
MAINTAIN
GENERATORS

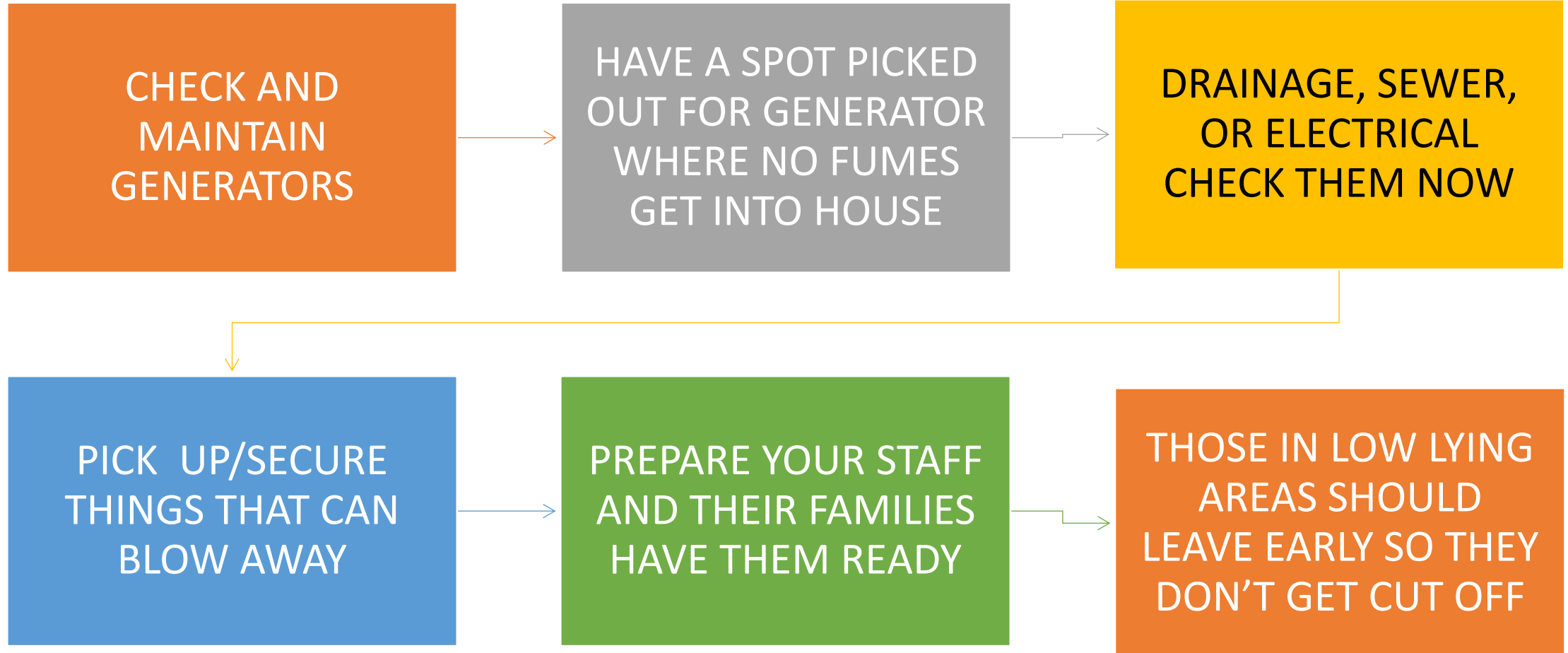
HAVE A SPOT PICKED
OUT FOR GENERATOR
WHERE NO FUMES
GET INTO HOUSE

DRAINAGE, SEWER,
OR ELECTRICAL
CHECK THEM NOW

PICK UP/SECURE
THINGS THAT CAN
BLOW AWAY

PREPARE YOUR STAFF
AND THEIR FAMILIES
HAVE THEM READY

THOSE IN LOW LYING
AREAS SHOULD
LEAVE EARLY SO THEY
DON'T GET CUT OFF





LOCAL GOVERNMENT PRE STORM ACTIONS

PARISH, MUNICIPALITIES, LAW/FIRE, REC/DRAINAGE, SEWER DISTRICTS PREPARE, STOCK UP ON NEEDED ITEMS. FOOD FOR WORKERS. FUEL FOR VEHICLES/PUMPS.

SANDBAGS, SAND/ GIVE US AND THE PUBLIC THE LOCATIONS AND HRS OF OPERATION PUT ON YOUR FACEBOOK PAGES.

TAKE STOCK IN WHAT YOU HAVE ON HAND AND GET WHAT'S NEEDED

GENERATORS, SERVICE THEM, HAVE REPAIR ITEMS ON HAND. WRITE DOWN INFORMATION NEEDED FOR A REPLACEMENT GENERATOR OR PUMP KEEP IN RECORDS SHOULD ONE GO OUT DURING THE STORM YOU WILL BE ABLE TO GIVE THE INFORMATION TO OEP OR RENTAL COMPANY.

FUEL PLANS MUST BE MADE AHEAD OF TIME.

DOCUMENT, INVOICES, PHOTOS OF FLOOD FIGHTING ACTIVITIES, STORM PREPARATIONS, FEMA REQUIRED (6 MONTHS LATER FEMA WILL ASK FOR THE PHOTOS) EACH DEPT SECURE THOSE DOCUMENTS AND TURN IN TO RESPECTIVE CHANNELS.

UPDATE CALLOUT LIST FOR ALL DEPARTMENTS.

GET A GAME PLAN

- MEDICAL NEEDS, OXYGEN, O2 GENERATORS TELL YOUR VENDORS TO BRING YOU EXTRA TANKS ETC. SAME GOES FOR MEDICATIONS.
- OXYGEN EXCHANGE BOTTLES EMERGENCY ONLY, SOME AT THE MORGAN CITY/FRANKLIN FIRE DEPT.DEFINED NO VENDORS OPEN THROUGH NORMAL SUPPLY.
- POWER OUTAGES: GENERATORS/SAFETY/ CO2 DETECTOR. HAVE PORTABLE POWER SOURCES FOR CHARGING AND TO OPERATE MEDICAL DEVICES.
- FOOD AND WATER SUPPLY/PRESCRIPTIONS/EMERGENCY FUNDS
- TELL EVERYONE YOUR PLAN, FAMILIES CALL ONE PERSON OUTSIDE DANGER ZONE TO REPORT YOUR STATUS AND GIVE FREQUENT UPDATES.
- ANYONE WITH OXYGEN CONCENTRATOR SHOULD PURCHASE A POWER PACK FOR OPERATION WHEN POWER IS OUT.

KNOW YOUR EVACUATION ROUTES

- TAKE HWY 90, HWY 182, HWY 14, HWY 70
- PARTS OF HWY 90 ON WAY TOWARDS NEW IBERIA WILL BE ONE LANE. PLAN ON LONG DELAYS OR USE ALTERNATE ROUTE AND LEAVE EARLY.
- THE SOONER YOU LEAVE THE BETTER AND BE PATIENT, DRIVE WITH CAUTION. NO ONE NEEDS TO GET INTO AN ACCIDENT.
- FILL UP YOUR CAR BEFORE LEAVING
- BRING WATER, SNACKS, MEDICINE, PHONE CHARGERS FOR THE DRIVE.
- USE 511LA.ORG FOR TRAFFIC INFORMATION BEFORE LEAVING



SHELTERING PLANS

- NURSING HOME, HOMEBOUND ETC. SHOULD LEAVE EARLY AS POSSIBLE AND CALL FIRE/POLICE/VOLUNTEERS, THEY CAN HELP PREPARE FOR YOUR MOVE. FIRE MARSHALL HAS TO INSPECT FACILITY BEFORE RETURN
- ST MARY PARISH SHELTER IS LOCATED IN ALEXANDRIA LOUISIANA
- OUR PLAN IS TO USE LOCAL SCHOOL BUSES AND DRIVERS TO TRANSPORT THOSE THAT REQUIRE TRANSPORTATION TO A SHELTER.
- THERE WILL BE TWO PARISH PICK UP POINTS, FRANKLIN HIGH AND MORGAN CITY JR HIGH. ADMIN PERSONNEL FROM EACH CITY WILL BE NEEDED ONSITE TO AID WITH REGISTRATION AND FIRE AND PD TO ASSIST.



St. Mary Parish Evacuation Pick up Point

FRANKLIN HIGH SCHOOL
PICK UP POINT
1401 CYNTHIA STREET
FRANKLIN LA



CTN/ Capacity

900/ 900

MOU

CURRENT STATUS GOOD THRU MAY 2030

**DESTINATION
Shelter**

Rapides Coliseum

Transportation

SCHOOL BUSES
UPON ARRIVAL STAY AT SHELTER

Registration

ETN REGISTRATION BY PARISH/CITY WORKERS
OPH LNO ONSITE

Staffing

PARISH/CITY STAFF/FIRE DEPT/POLICE DEPT

Feeding

IN RAPIDES CATERING STATE CONTRACT

Security

FRANKLIN POLICE DEPT

Pets

In the annex

TRIAGE

DETERMINE IF WELL ENOUGH AND SELF SUFFICIENT

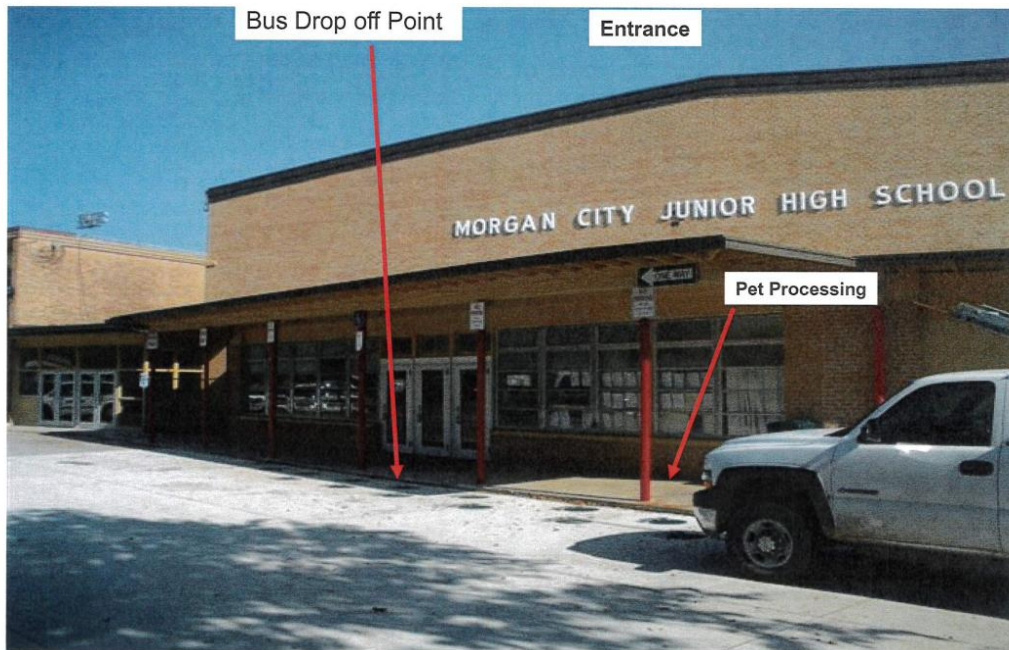
Trigger

72-48 hours all based on the storm

+ St. Mary Parish Evacuation Pick up Point

MORGAN CITY JR HIGH
911 MARGUERITE STREET
MORGAN CITY, LA.

Bus Drop Off Point



CTN/ Capacity	900/ 900
MOU	CURRENT STATUS GOOD THRU MAY 2030
DESTINATION Shelter	Rapides Coliseum
Transportation	SCHOOL BUSES UPON ARRIVAL STAY AT SHELTER
Registration	ETN REGISTRATION BY PARISH/CITY WORKERS OPH LNO ON SITE
Staffing	PARISH/CITY STAFF/FIRE DEPT/POLICE DEPT
Feeding	IN RAPIDES CATERING STATE CONTRACT
Security	MORGAN CITY POLICE DEPT
Pets	In the annex
TRIAGE	DETERMINE IF WELL ENOUGH AND SELF SUFFICIENT
Trigger	72-48 hours all based on the storm

EVACUATION CONCERNS

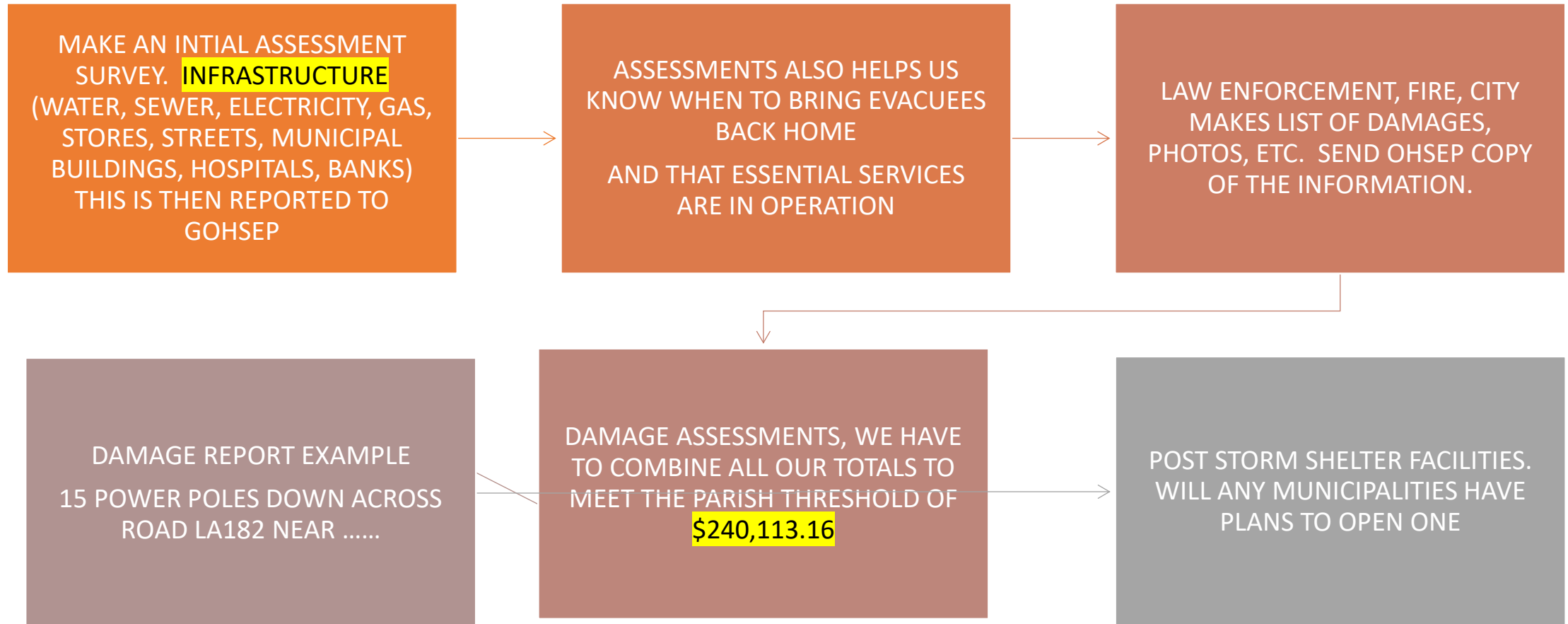
- THOSE WHO CAN, LEAVE EARLY DO NOT HESITATE TO SEE HOW BAD THE STORM WILL BE OR IF IT WILL CHANGE DIRECTION.
- PARTS OF HIGHWAY 90 WILL STILL BE DOWN TO ONE LANE EAST AND WEST. ST. DIRECTIONS IN IBERIA PARISH AT THE PATOUT RAILROAD TRACKS. TAKE ALTERNATE ROUTES ON THE WESTBOUND SERVICE ROAD IF NEEDED AND GET BACK ON HWY 90 WHEN AVAILABLE.
- STORMS CAN CHANGE YOUR TIMETABLE (CAN SHIFT TRACKS AND INTENSIFY)
- DON'T LET YOUR ESCAPE ROUTES GET FLOODED OR BLOCKED BY FALLEN TREES FROM HIGH WINDS BEFORE YOU DECIDE TO LEAVE.
- THE ROADS WILL GET CONGESTED FROM OTHER PARISHES BEFORE YOU LEAVE.

HIGHWAY 90 CONGESTION BE READY FOR IT!

HWY90 NEW IBERIA SINGLE LANE EASTBOUND AND WESTBOUND 1 MILE LONG
IBERIA HWY 90 TO LOOK LIKE THIS.



POST STORM



POST STORM CONTINUED

- YOU MAY COME HOME TO NO ELECTRICITY
- YOUR CELL PHONES MAY NOT WORK
- YOUR HOUSE/BUSINESS PHONES MAY NOT WORK
- YOUR GROCERY STORES MAY BE CLOSED
- YOUR GAS STATIONS MAY BE EMPTY
- YOU MAY NOT BE ABLE TO GET TO YOUR HOUSE (DEBRIS ETC)
- YOU MAY NOT HAVE DRINKING WATER
- YOU MAY NOT HAVE ELECTRICITY TO PUMP SEWAGE
- YOUR HEALTH CLINICS AND HOSPITAL MAY BE CLOSED
- WAIT FOR YOUR MAYOR, PARISH PRESIDENT TO LET YOU KNOW THAT INFRASTRUCTURE IS UP AND IT IS SAFE TO COME BACK HOME.
- NURSING HOMES HAVE TO MAKE SURE UTILITIES(WATER/SEWER) ARE BACK UP, FOOD IN STOCK, BUILDING CHECKED WITH FIRE MARSHAL.

A "POD" refers to a [Point of Distribution](#), a centralized location where the public can access life-sustaining supplies, such as food and water, following a disaster or emergency.

Some non-profit organizations join in on the POD and issue their donations at the same time.

What they offer:

- The National Guard is sometimes tasked with distributing food, ice, and water at POD sites. They are limited in the number of locations they can set up.

Locations for St Mary Parish PODS:

- Morgan City at the Municipal Auditorium
- Franklin at the corner of Hospital Ave and Haifleigh Street

Closure of a POD:

- The POD starts shutting down when power and water are restored and the stores open.
- Municipalities in outlying areas need to coordinate with the POD leadership to load up trailers/trucks from outlying communities and have workers distribute the supplies. Any commodities issued from a POD location are for storm victims.



Please fill out survey like below to report damage to your home in the aftermath of a significant weather event or disaster (residential structures only, no vehicles). Information collected here will help parish, state and federal authorities better understand the location and severity of damage impacts.

*Homeowners should still file a claim with their insurance company. Submitting this information does not guarantee the availability of federal assistance. For each storm there will be a new scan code made available. Look for the new codes after each event, or go to damage.la.gov



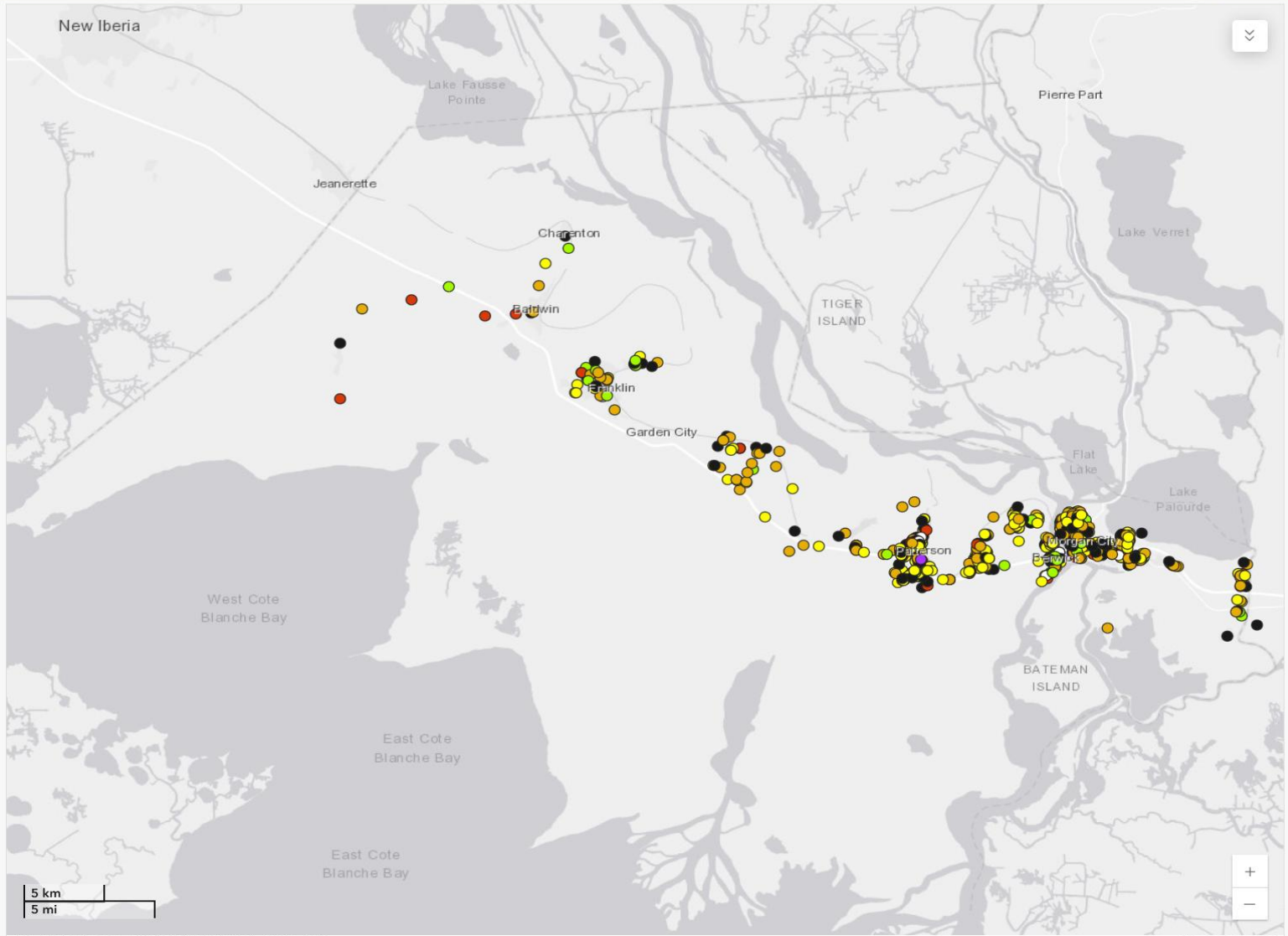
**TO REPORT DAMAGE TO YOUR
RESIDENCE CAUSED BY
RECENT SEVERE WEATHER,
VISIT DAMAGE.LA.GOV OR
SCAN THE QR CODE BELOW.**



Total IA Assessments

731

- ### Recent Assessments
- 10/2/2024, 11:55 AM
Morgan City, St. Mary Parish
Submitted by: Public User
 - 10/2/2024, 10:42 AM
Morgan City, St. Mary Parish
Submitted by: Public User
 - 10/2/2024, 9:45 AM
Morgan City, St. Mary Parish
Submitted by: Public User
 - 10/2/2024, 9:45 AM
Morgan City, St. Mary Parish
Submitted by: Public User
 - 10/2/2024, 9:45 AM
Morgan city, St. Mary Parish
Submitted by: Public User
 - 10/2/2024, 9:40 AM
Morgan City, St. Mary Parish
Submitted by: Public User
 - 10/2/2024, 9:39 AM
Morgan City, St. Mary Parish
Submitted by: Public User
 - 10/2/2024, 9:39 AM
berwick, St. Mary Parish
Submitted by: Public User
 - 10/2/2024, 9:36 AM
Patterson, St. Mary Parish
Submitted by: Public User
 - 10/2/2024, 9:35 AM
Morgan City, St. Mary Parish
Submitted by: Public User
 - 10/2/2024, 9:34 AM
patterson, St. Mary Parish
Submitted by: Public User



GOHSEP Verified IA Assessments

731

DESTROYED 10	MAJOR 30
MINOR 250	AFFECTED 204
UNAFFECTED 60	INELIGIBLE 7
UNABLE TO VERIFY 170	NOT VERIFIED 0



EMERGENCY PREPAREDNESS GUIDE

**SCAN WITH PHONE CAMERA
TO VIEW DOCUMENT**





STAY INFORMED!
REGISTER FOR CODERED ALERTS.
IT'S EASY AND QUICK TO ENROLL



STEP 1 – GO TO REGISTRATION PAGE

<https://accountportal.onsolve.net/saintmaryparishgovla>

STEP 2 – CREATE PROFILE GO TO BLUE SECTION FIRST TO CREATE ACCOUNT

A—The fastest and easiest way is to sign in via SSO with your Google, Facebook, or X account. If using SSO, proceed to Step 3 after completing the sign-in process.

OR

B—Click REGISTER to set up a new profile. This will take you to Steps 2.1 & 2.2



STEP 2.1 – FILL IN YOUR DETAILS

- Add your details on the Create an Account form.
- Tick the privacy statement and the CAPTCHA boxes.
- Click NEXT to continue (the button will turn blue when all fields are complete - all fields are mandatory).



STEP 2.2 – ENTER VERIFICATION CODE

A—Select your Preferred Contact Method to receive the verification code (this is not for receiving Alerts – just the code).

B—Enter the code you received and click NEXT.





SCAN THE IMAGE BELOW AND REGISTER FOR CODE RED

