

A dramatic sky over a dark ocean with a bright light source on the horizon. The sky is filled with dark, swirling clouds, and a bright light source, possibly the sun or moon, is visible on the horizon, creating a lens flare effect. The ocean is dark and textured with small waves. A white diagonal line runs from the top left towards the bottom right, intersecting the horizon.

2026 HURRICANE  
SEASON

TIM OSBORN, NOAA  
COAST SURVEY

Port Morgan City- 14<sup>th</sup> Annual,

Bayou Safety Meeting

Morgan City, Louisiana

Awareness, Preparedness, Response, Recovery

# The Fundamentals

- Connect with Federal/State/Port and Waterway Community- USCG, NOAA NWS, PALS, GICA, Bayou Region, Others
  - Create a Working Portfolio of Imagery, Inventory, Vessels
    - Establish a Working Base for Any Storm Response
      - Report on Status, Damage, Missing Infrastructure, Spills, Lost Vessels, Barges

What Is Your Local NWS WFO? Website, Phone, Name of Forecasters?

What is Your Local COTP, Sector Waterways Chief and Contacts?

Updated Port and Waterway Contacts?

# Pre Event Imagery is Very Important!

NOAA Offers Free Pre Storm Season Imagery for Most of the Gulf Areas. Adding Your Imagery to Cover Critical Ports, Waterways, Facilities Are All Important – for a Post Storm Recovery Program

[https://geodesy.noaa.gov/storm\\_archive/coastal/viewer/index.html](https://geodesy.noaa.gov/storm_archive/coastal/viewer/index.html)



El Nino?

Your National Hurricane Center-  
<https://www.nhc.noaa.gov/>

"It Only Takes One"

[https://www.cpc.ncep.noaa.gov/products/analysis\\_monitoring/enso\\_advisory/ensodisc.shtml](https://www.cpc.ncep.noaa.gov/products/analysis_monitoring/enso_advisory/ensodisc.shtml)



# Preparedness Through the Entire Season is Key

## Key October Hurricanes

Milton (2024): Category 3 at landfall, hitting Florida in October

Zeta (2020): Strong late October hurricane that hit Louisiana

Delta (2020): Formed early October, impacting Louisiana

Michael (2018): Category 5, made landfall on the Florida Panhandle

Matthew (2016): Powerful hurricane that impacted the Southeastern U.S

Sandy (2012): Known as "Superstorm Sandy," it spanned late Oct-early Nov

Wilma (2005): Major, intense hurricane in late October

Mitch (1998): Category 5; caused massive destruction in Central America, lasting into November.

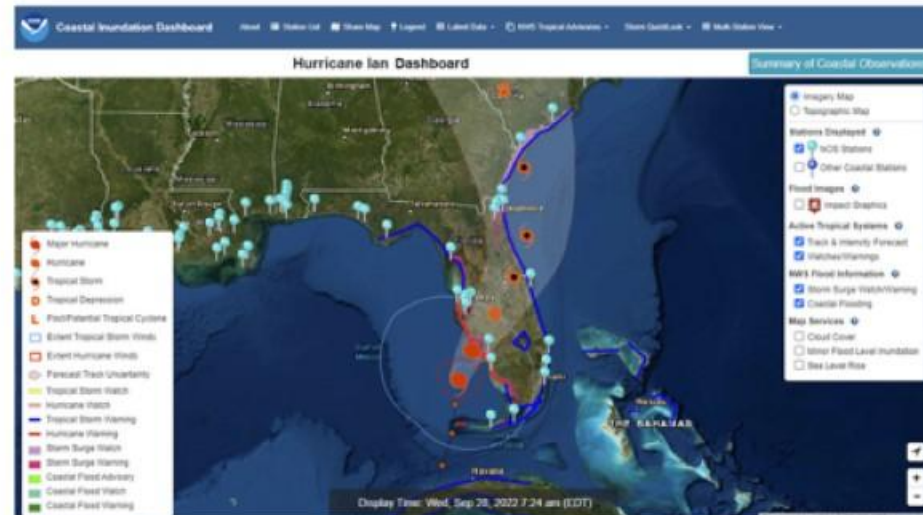


## Water Levels and Surge Reporting- NOAA Inundation Dashboard

<https://oceanservice.noaa.gov/facts/storm-dashboard.html>

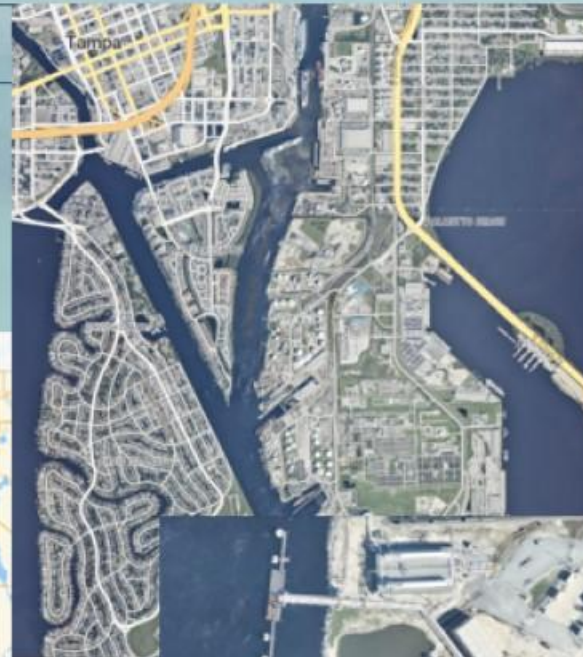
### What is the custom dashboard feature of NOAA's Coastal Inundation Dashboard?

Users can use this tool to view water levels in the path of a storm.



<https://storms.ngs.noaa.gov/>

# NOAA NGS RSD Imagery Acquisition



 **Emergency Response Imagery**  
National Geodetic Survey

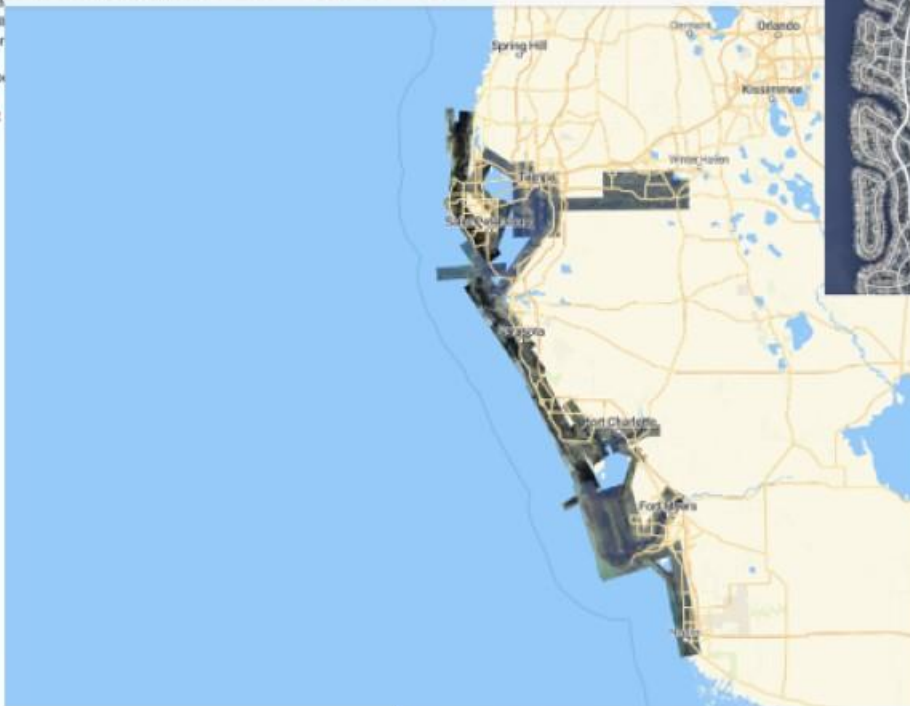
NGS Home | About NGS | Data & Imagery | Tools | Surveys | Science & Education |  Search

The imagery posted on this site was acquired by the National Geodetic Survey's Sensing Division to support NOAA's emergency response requirements. In addition, it will be used for testing and developing standard operating procedures for emergency response.

Tips for navigating the Emergency Response Imagery:

### Emergency Response Imagery:

- Winter Storm (2026)
- Hurricane Melissa (2025)
- Hurricane Erin (2025)
- Texas Flooding (2025)
- Midwest U.S. Flooding (2025)
- California Fire (2025)
- Hurricane Milton (2024)
- Hurricane Helene (2024)
- Hurricane Francine (2024)
- Hurricane Debby (2024)
- Hurricane Lee (2023)
- Hurricane Idalia (2023)
- Mnui Fire (2023)
- Hurricane Nicole (2022)
- Hurricane Ian (2022)
- Hurricane Ida (2021)
- Hurricane Henri (2021)
- Hurricane Zeta (2020)
- Hurricane Delta (2020)
- Hurricane Sally (2020)
- Hurricane Laura (2020)
- Hurricane Isaias (2020)
- Nashville Tornadoes (2020)
- Hurricane Dorian (2019)
- Hurricane Barry (2019)
- Hurricane Michael (2018)
- Hurricane Florence (2018)
- Tropical Storm Gordon (2018)
- Hurricane Nate (2017)
- Hurricane Maria (2017)
- Hurricane Irma (2017)
- Hurricane Harvey (2017)
- Hurricane Matthew (2016)



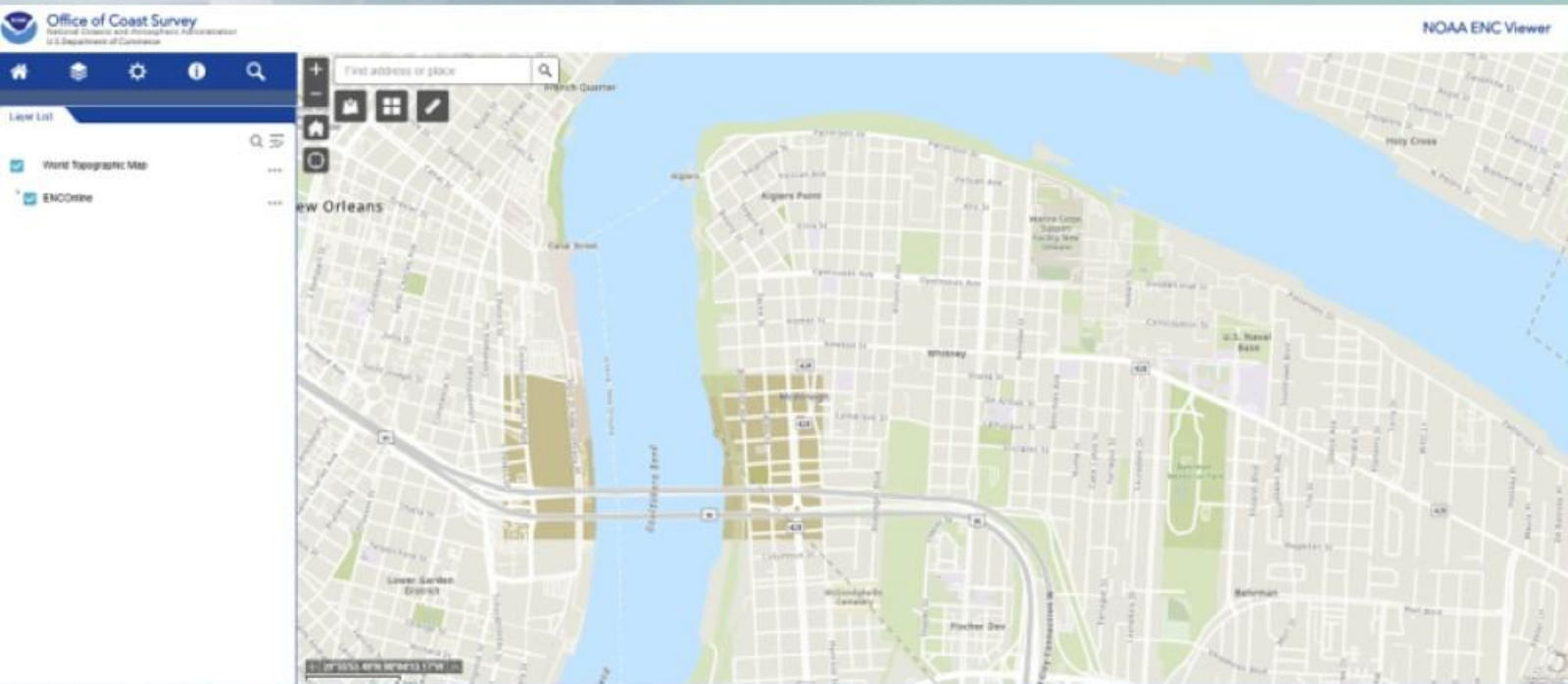
# Coordinated Response with USACE and USCG



# Know Your Charts And Area

<https://nauticalcharts.noaa.gov/charts/noaa-enc.html>

<https://nauticalcharts.noaa.gov/enconline/enconline.html>



- Ensure Your Facilities and Port Areas are Correctly Charted!
- If There is a Correction or Addition Needed- Contact Us!
- Retain Pre Storm Charted Areas of Your Port or Facility Area and Note and Publicize the Impacts to the Channels, Berths, Docks, Mooring Areas

# We are Here to Respond, Recover

- ⦿ Contact Us At Any Time
- ⦿ Port Morgan City and the Central Coastal Louisiana Region is a Terrific Partner
- ⦿ A 'Refresh' in preparation for 2026's Hurricane Season is Key
- ⦿ Any Preparedness is Important. Don't Let the Summer and Fall of This Year be Missed Opportunities to Work on Surveying and Charting Issues

Thank You

Tim Osborn, NOAA Coast Survey

