



HURRICANE PREPAREDNESS MEETING

2023

2022

NUMBER	TYPE	NAME	DATE
1	TS	ALEX*	JUN 5-6
2	TS	BONNIE	JUL 1-2
3	TS	COLIN*	JUL 1-2
4	H	DANIELLE	SEP 1-8
5	H	EARL	SEP 3-10
6	MH	FIONA	SEP 14-23
7	TS	GASTON	SEP 20-26
8	TS	HERMINE	SEP 23-25
9	MH	IAN	SEP 23-30
10	H	JULIA	OCT 4-7
11	TS	KARL	OCT 11-15
12	H	LISA	OCT 31-NOV 5
13	H	MARTIN	NOV 1-3
14	H	NICOLE	NOV 7-11

* Post-storm analysis is complete

**U.S. DEPARTMENT OF COMMERCE, NATIONAL WEATHER SERVICE
NORTH ATLANTIC HURRICANE TRACKING CHART**

Preliminary

LAMBERT CONFORMAL CONIC PROJECTION
STANDARD PARALLELS AT 30° AND 60°
SCALE OF NAUTICAL MILES
0 250 500

- Major Hurricane
- Hurricane
- Tropical Storm
- Tropical Depression
- Subtropical Storm
- Subtropical Depression
- Wave/Low
- Extratropical Storm
- Position at 0000 UTC
- Position/date at 1200 UTC
- Storm Number

DECLARATIONS OF EMERGENCY

- PARISH PRESIDENT
- MAYORS
- TRIBAL CHIEF OF THE CHITIMACHA TRIBE
- GOVERNOR MAKES DECLARATION REQUEST
- TO THE PRESIDENT
- PRESIDENT OF U.S. DECLARES A NATIONAL EMERGENCY



EMERGENCY OPERATIONS CENTER

- EMERGENCY MEETINGS WILL BE HELD WITH PUBLIC OFFICIALS AND SUPPORT STAFF WHO GET BRIEFED BY THE WEATHER SERVICE AND GOHSEP.
- DECISIONS ARE MADE AS TO RESOURCES, EVACUATIONS, PLAN OF ACTION TO TAKE.
- PUBLIC INFORMATION IS PUT OUT.
- AFTER EACH MEETING, EMAILS ARE SENT OUT TO ALL AGENCIES/MEDIA
- SLIDES FROM WEATHER SERVICE WILL BE ATTACHED

THE MORE THINGS CHANGE: THE MORE THINGS STAY THE SAME

- CHECK AND MAINTAIN GENERATORS FUEL AND BATTERY, ALL CONNECTIONS, DOES GENERATOR RUN ESSENTIAL NEEDS, LOAD TEST
- DRAINAGE, SEWER, OR ELECTRICAL CHECK THEM NOW.
- PREPARE YOUR STAFF AND THEIR FAMILIES HAVE THEM READY
- EARLY HIGH-WATER LEVELS COULD BE A PROBLEM

PRE STORM

PARISH, MUNICIPALITIES, LAW/FIRE, REC/DRAINAGE, SEWER DISTRICTS
PREPARE, STOCK UP ON NEEDED ITEMS.

SANDBAGS, SAND/ GIVE US AND THE PUBLIC THE LOCATIONS AND HRS
OF OPERATION

TAKE STOCK IN WHAT YOU HAVE ON HAND AND GET WHAT'S NEEDED
GENERATORS, SERVICE THEM, HAVE REPAIR ITEMS ON HAND.

FUEL PLANS MUST BE MADE AHEAD OF TIME.

DOCUMENT, INVOICES, PHOTOS OF FLOOD FIGHTING ACTIVITIES,
STORM PREPARATIONS, FEMA REQUIRED (6 MONTHS LATER FEMA
WILL ASK FOR THE PHOTOS) EACH DEPT SECURE THOSE AND TURN IN
TO RESPECTIVE CHANNELS. FEMA WILL ASK WHY AND YOU CAN SHOW
THEM WITH PICS.

UPDATE CALLOUT LIST FOR ALL DEPARTMENTS.

TIDE AND STORM SURGE PROJECTIONS

- THESE PROJECTIONS ARE IMPORTANT IN DETERMINING WHETHER AN EVACUATION ORDER IS TO BE ISSUED.
- PROJECTIONS DO NOT TAKE INTO ACCOUNT THE WORK DONE BY THE ST MARY PARISH LEVEE DISTRICT. THE LEVEE DISTRICT MONITORS THE FORECAST AND DETERMINES WHAT OUR RISK LIMITS ARE.
- WE ALSO MONITOR STORM SURGE LEVELS WITH WATER GAUGES ALONG THE COAST. THESE GIVE US GOOD INDICATIONS FOR MONITORING.

Hurricane Delta Storm Surge Information Time line

- Cypremort Point USGS gauge # 37387040
- 10/9 8.96+ 9:00 Pm
- 10/9 9.19+ 9:15Pm
- 10/9 8.78- 10:15Pm
- 10/9 7.75- 11:15Pm
- 10/10 4.70- 5:15Am
- Bayou Sale USGS gauge # 07381670
- 10/9 4.0+ 8:00Pm
- 10/9 5.0+ 9:00Pm
- 10/9 5.4+ 9:15Pm
- 10/9 6.23+ 11:15Pm
- 10/10 5.10- 6:15Am
- 10/10 4.7- 7:15Am
- Atchafalaya River Morgan City USGS gauge # 07381600
- 10/9 5.5+ 9:00Pm
- 10/9 6.02+ 10:00Pm
- 10/9 6.34+ 11:00Pm
- 10/10 5.10- 6:00Am
- 10/10 4.7- 7:15Am



ADD 2 FEET FOR ELEVATION.
THIS BOARD IS AT A -2 ELEVATION

GET A GAME PLAN

- MEDICAL NEEDS, OXYGEN, O2 GENERATORS TELL YOUR VENDORS TO BRING YOU EXTRA TANKS ETC. FIRE DEPTS CALL TO PREPARE
- OXYGEN EXCHANGE BOTTLES IF SITUATION DICTATES, THEY MAY GET SOME AT THE MC/FRANKLIN FIRE DEPT
- POWER OUTAGES: GENERATORS/SAFETY/ CO2 DETECTOR
- FOOD AND WATER SUPPLY/PRESCRIPTIONS/EMERGENCY FUNDS
- TELL EVERYONE YOUR PLAN, FAMILIES CALL ONE PERSON OUTSIDE DANGER ZONE OF YOUR STATUS AND GIVE FREQUENT UPDATES.
- FIRE DEPTS WITH GENERATORS PROVIDE EXTENSION CORD TO OUTSIDE AFTER THE STORM SO RESIDENTS CAN COME BY TO CHARGE THEIR OXYGEN GENERATORS WHEN UTILITIES ARE OUT.

KNOW YOUR EVACUATION ROUTES

- TAKE HWY 90, HWY 182, HWY 14, HWY 70
- HWY 90 AT NEW IBERIA WILL BE JAMMED PLAN ON LONG DELAYS OR USE ALTERNATE ROUTE AND LEAVE EARLY.
- THE SOONER YOU LEAVE THE BETTER AND BE PATIENT, DRIVE WITH CAUTION. NO ONE NEEDS TO GET INTO AN ACCIDENT
- FILL UP CAR BEFORE LEAVING
- HAVE SUPPLY OF WATER/SNACKS/MEDICINE,PHONE CARGERS FOR THE DRIVE.
- USE 511LA.ORG FOR TRAFFIC INFORMATION BEFORE LEAVING

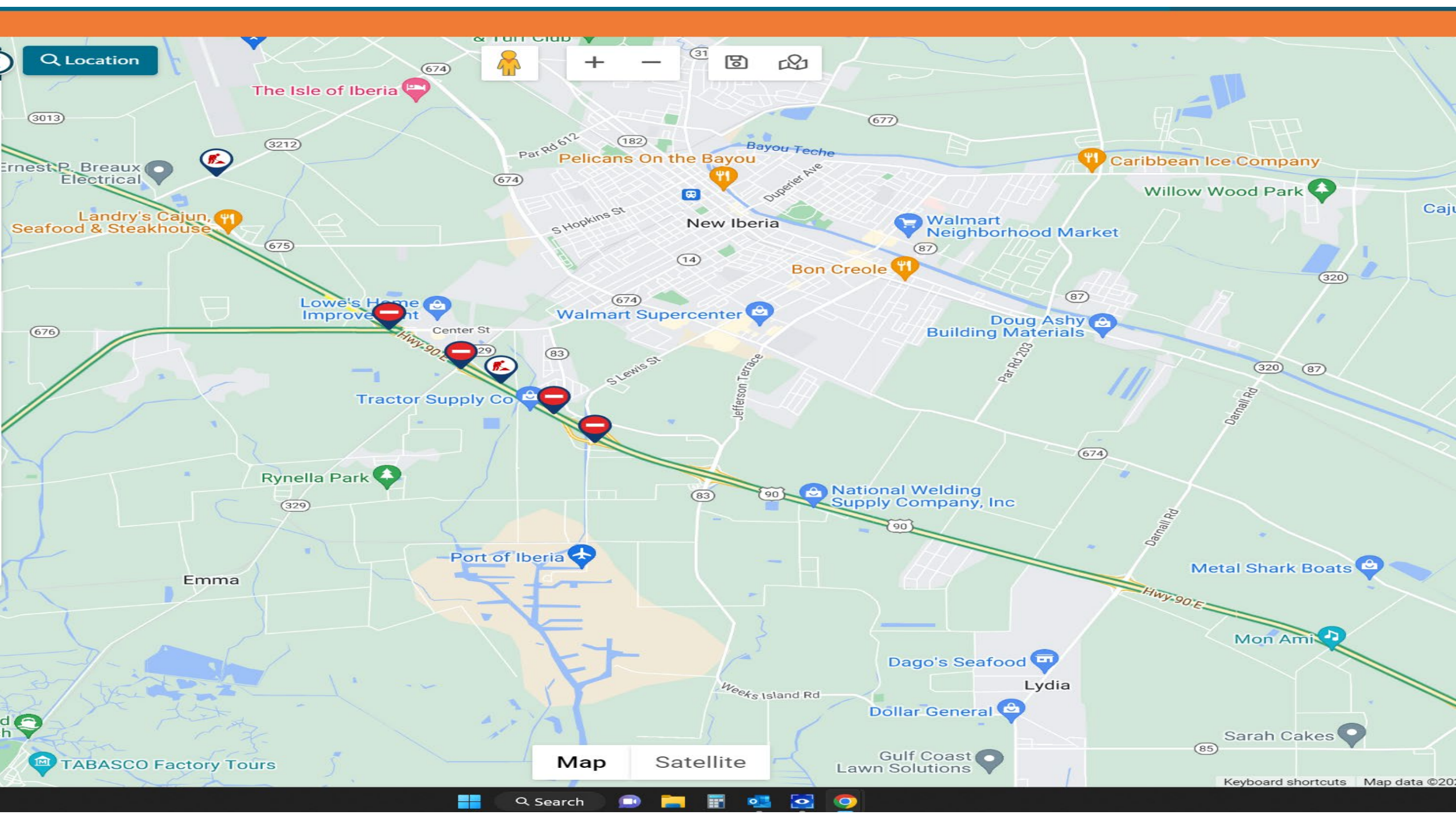
EVACUATION CONCERNS

- THOSE WHO CAN LEAVE EARLY WILL HESSITATE.
- PARTS OF HIGHWAY 90 WILL STILL BE DOWN TO ONE LANE EAST AND WEST.
- YOU MAY HAVE LITTLE TIME TO EVACUATE (STORM TRACKS SHIFT AND STORM INTENSIFIES AND SPEED INCREASES.)
- EVACUATION ROUTES WILL BE JAMMED THINK OF ALTERNATE ROUTES
- DON'T LET YOUR ESCAPE ROUTES GET FLOODED OR BLOCKED BY FALLEN TREES FROM HIGH WINDS BEFORE YOU DECIDE TO LEAVE.

HIGHWAY 90 CONGESTION BE READY FOR IT!

HWY90 NEW IBERIA SINGLE LANE EASTBOUND AND WESTBOUND 3 MILES LONG





Location



The Isle of Iberia

Pelicans On the Bayou

Caribbean Ice Company

Willow Wood Park

Walmart Neighborhood Market

Bon Creole

Walmart Supercenter

Doug Ashy Building Materials

Tractor Supply Co

National Welding Supply Company, Inc

Metal Shark Boats

Mon Ami

Dago's Seafood

Lydia

Dollar General

Sarah Cakes

Gulf Coast Lawn Solutions

Map

Satellite

TABASCO Factory Tours

Keyboard shortcuts Map data ©2021


LAFAYETTE

HWY 90 ON RAMP

 **8 min**
3.6 miles

LA 83 ALTERNATE

**HWY 90 EVACUATION ROUTE
WITH ALTERNATE ROUTES
IN CONSTRUCTION AREA
NEAR NEW IBERIA**

 Layers

Port of Iberia

Google

Map data ©2022

United States

Terms

Privacy

Send feedback

SHELTERS

- THERE ARE NO PLANNED PRE STORM-SHELTERS IN THE PARISH
- SHELTERS USED FOR HURRICANE EVACUEES SHOULD BE CONSIDERED AS A **LAST RESORT** OPTION. ST MARY LAST RESORT SHELTER IS IN CENTRAL LOUISIANA, NOT A GYM IN ST MARY.
- BRING MEDICINE, CHANGE OF CLOTHES, SNACKS.

SHELTERING PLANS

- NUSING HOME, HOMEBOUND ETC SHOULD LEAVE EARLY AS POSSIBLE
- LET US KNOW EARLY SO FIRE/POLICE CAN HELP PREPARE FOR YOUR MOVE AND RETURN
- ST MARY PARISH SHELTER IS LOCATED IN CENTRAL LOUISIANA
- OUR PLAN IS TO USE LOCAL SCHOOL BUSES AND DRIVERS TO TRANSPORT THOSE THAT REQUIRE TRANSPORTATION TO A SHELTER.
- THERE WILL BE TWO PARISH PICK UP POINTS, FRANKLIN HIGH AND MORGAN CITY JR HIGH. CITY ADMIN PERSONNEL WILL BE NEEDED TO AID WITH REGISTRATION



POST STORM

- MAKE AN INTIAL ASSESSMENT SURVEY, USE [DAMAGE.LA.GOV](https://damage.la.gov) ANYONE CAN USE THE [DAMAGE.LA.GOV](https://damage.la.gov) APP TO REPORT DAMAGES
- INFRASTRUCTURE ASSESSMENTS(WATER, SEWER, ELECTRICITY, GAS, STORES, STREETS, MUNICIPAL BUILDINGS, HOSPITALS, BANKS) WE NEED TO REPORT THIS TO GOHSEP
- THIS ALSO HELPS US KNOW WHEN TO BRING EVACUEES BACK HOME
- LAW ENFORCEMENT, FIRE, CITY MAKES LIST OF DAMAGES, PHOTOS, ETC. SEND OHSEP COPY OF THE INFORMATION.
- DEBRIS ASSESSMENTS AND DEBRIS PLAN, WE HAVE TO COMBINE ALL OUR TOTALS TO MEET THE PARISH THRESHOLD.
- ALL DAMAGE REPORTS ARE COMPILED TO MEET FEMA THRESHHOLD
- POST STORM SHELTER FACILITIES. WILL ANY MUNICIPALITIES HAVE PLANS TO OPEN ONE. WILL BE DETERMINED ON DAMAGES.

POST STORM CONT'D

- YOU MAY COME HOME TO NO ELECTRICITY
- YOUR CELL PHONES MAY NOT WORK
- YOUR HOUSE/BUSINESS PHONES MAY NOT WORK
- YOUR GROCERY STORES MAY BE CLOSED
- YOUR GAS STATIONS MAY BE EMPTY
- YOU MAY NOT BE ABLE TO GET TO YOUR HOUSE (DEBRIS ETC)
- YOU MAY NOT HAVE DRINKING WATER
- YOU MAY NOT HAVE ELECTRICITY TO PUMP SEWAGE OUT
- YOUR HEALTH CLINICS AND HOSPITAL MAY BE CLOSED
- WAIT FOR YOUR MAYOR, PARISH PRESIDENT TELLS YOU THAT INFRASTRUCTURE IS UP TO COME BACK HOME.
- NURSING HOMES HAVE TO MAKE SURE UTILITIES(WATER/SEWER) ARE BACK UP.



SOUTH MISSISSIPPI (SPACE CENTER)





NEW IBERIA AREA 8-3-22



NEW IBERIA AIRPORT 8-3-22



NEW IBERIA TORNADO DEC 2022

2023 EL NINO

- ENSO-neutral conditions are expected to continue through the Northern Hemisphere spring, followed by a 62% chance of El Niño developing during May-July 2023.
- The low-level surface winds, which normally blow from east to west along the equator (“easterly winds”), instead weaken or, in some cases, start blowing the other direction (from west to east or “westerly winds”). El Niño recurs irregularly, from two years to a decade, and no two events are exactly alike. El Niño events can disrupt normal weather patterns in the United States and globally.

EL NINO ACTIVITY IN PAST YEARS

- RELATIVELY LOW IMPACTS ARE FAR AS NUMBER OF EVENTS
- BUT..... 2005 JULY CINDY, AUGUST KATRINA, SEPT RITA
- 2020 AUG LAURA OCT DELTA ZETA
- 2017 HARVEY 60 INCHES OF RAIN OVER SOUTHEAST TEXAS AND LOUISIANA
- 1957 AUDREY 1965 BETSY
- 1964 HILDA (LA NINA)

- The public is reminded that it only takes one hurricane landfall in their backyard to make it an active season for them, YOU need to prepare the same for every season, regardless of how much or how little activity is predicted.